

## Charges from January 2021

No increase on 2020 prices

Full details at [www.bwnd.co.uk](http://www.bwnd.co.uk)



Scan the code above for the full website

### Trial flights - available as Gift Vouchers

Aerotow to 2000 feet	£93
Aerotow to 3000 feet	£128
A high tow to 1 Mile (4600 feet above airfield level)	£175
<i>All above include 30 day full membership</i>	

### Weekday group flying

(10 people or more)

	Adults	Under 25
1 winch launch	£40.00	£30.00
1 Aerotow	£70.00	£45.00

### Charges for club members

Adult Membership	£362
Family Membership	£543
Junior Membership (under age 25)	£181
Daily Flying (reciprocal) per day	£10.20
Trailer facility fee per year	£186
Aerotow to 1000ft and up to 1900ft	£18.60 (+£1.50/100ft)
" 2000ft and above	£33.60 (+£1.02/100ft)
Winch Launch	£9.64
Glider flying fee per hour	
Two seaters	£25.20
Single seaters	£21.60
Venture motor glider	£60.00

### Weight Restrictions

Minimum weight of 7 Stone (44.5kg)  
Maximum weight 16 Stone (101.5kg)

The Bath, Wilts and North Dorset Gliding Club Limited is a company registered in England and Wales with company number 00741827. Registered Office: The Park, Kingston Deverill, Warminster, Wiltshire. BA12 7HF



Bath Wilts & N Dorset Gliding Club

# Go Gliding at The Park

Take a trial flight in a two seat glider with a qualified instructor

Experience gliding and soaring from an aerotow to between 2000 and 4600 feet

Enjoy the views and take the opportunity to learn how to handle the controls of the glider

Please see the website for booking details.

## Learn To Fly And Soar

Free bookable tuition is given to club members by BGA qualified instructors in our fleet of Puchacz two-seater gliders

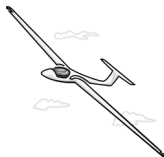


- ◆ Launching is by our high performance Skylaunch winch or aerotow behind our towplane
- ◆ 3 two seater gliders + a Venture motor glider are available for tuition
- ◆ 3 club owned single seat gliders are available for post solo flying



## Location

The airfield is at Kingston Deverill, 7 miles south of Warminster, just north of Mere, close to the Wiltshire / Dorset border. BA127HF



## Directions

From the north take the A350 southwards from Warminster and turn right at Longbridge Deverill onto the B3095. Kingston Deverill is 3 miles.

From the south or east take the A350 northwards from where it crosses the A303, after 1 mile it is signposted left to The Deverills. At the bottom of the hill turn left to Kingston Deverill.

From the southwest turn onto the B3095 at Mere. Kingston Deverill is 3 miles.

The route to the airfield is signposted along the lane next to Kingston Deverill church.

Please obey the 15 mph speed limit through the village and on the airfield.

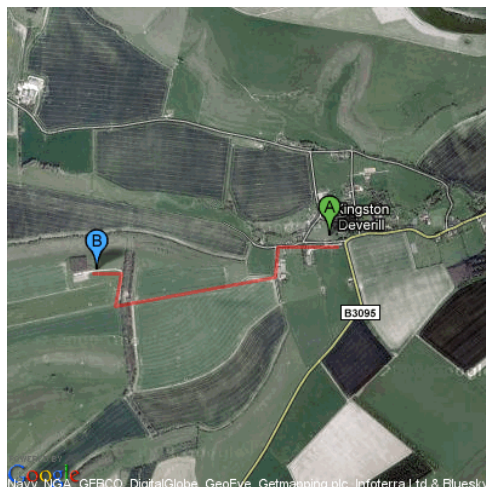
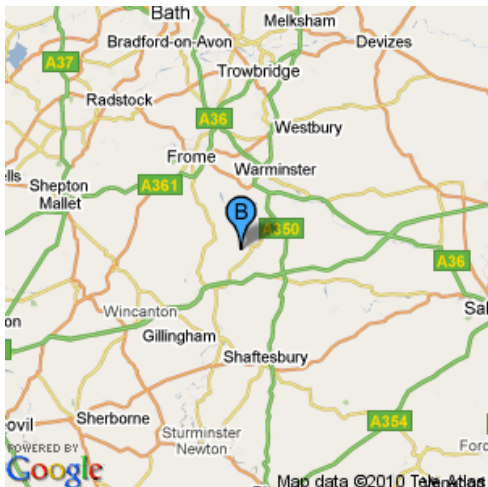
On arrival at the airfield follow the track to the hangar.

## Satnav

If using Google/Apple/Waze maps search for *Bath Wilts & N Dorset Gliding Club*

Scan QR the code to get directions on your smartphone

What3words /// stylist.slope.dusters



## Web site

For more detailed and up to date information please check out the web site at [www.bwnd.co.uk](http://www.bwnd.co.uk)

## Bookings

[bookings@bwnd.co.uk](mailto:bookings@bwnd.co.uk)

## Groups

[group@bwnd.co.uk](mailto:group@bwnd.co.uk)

## Clubhouse & Secretary

01985 844095

## Airfield Launchpoint

07762 738318

## When do we fly?

Trial and instructional flights are available every weekend and Bank Holidays, excluding Christmas day, but please remember to contact us to book the flight

## Safety advice on the airfield

- Keep a good lookout for gliders and other aircraft taking off and landing. Remember gliders are silent and the Tow Plane will be trailing a long rope.
- Keep well clear of the cables running from the winch to the glider. They will drop from the glider at the top of the launch.
- Never stand in front of a glider about to launch.
- If you are not sure of anything ask a club member.
- If you do not know how to get to the launch control caravan, which can be in any corner of the airfield ask for directions.
- Have a good flight!

## Taking a Trial Flight — and then why not consider full membership?

If you enjoyed your trial flight or feel gliding is for you why not join as a full flying member. You will be made most welcome. Training is organised under the supervision of the British Gliding Association. The club is a non profit making company with all the proceeds going towards improving the club facilities. The flying and training is run on a self help basis with the club members giving their time for free. This keeps the costs to a minimum - so flying may not be as costly as you first thought!

Our flight vouchers include a 30 day trial membership. During this period you can enjoy further flights at club member rates. See overleaf for details.

New members who join part way through the membership year only pay a pro-rata subscription. Please ask for details.