

Club Tasks 2025

100 Normal PRK-WIW-HES-RAD-PRK 110K

100 FAI PRK-Ansty Cross-SAS-PRK 115K new 2025

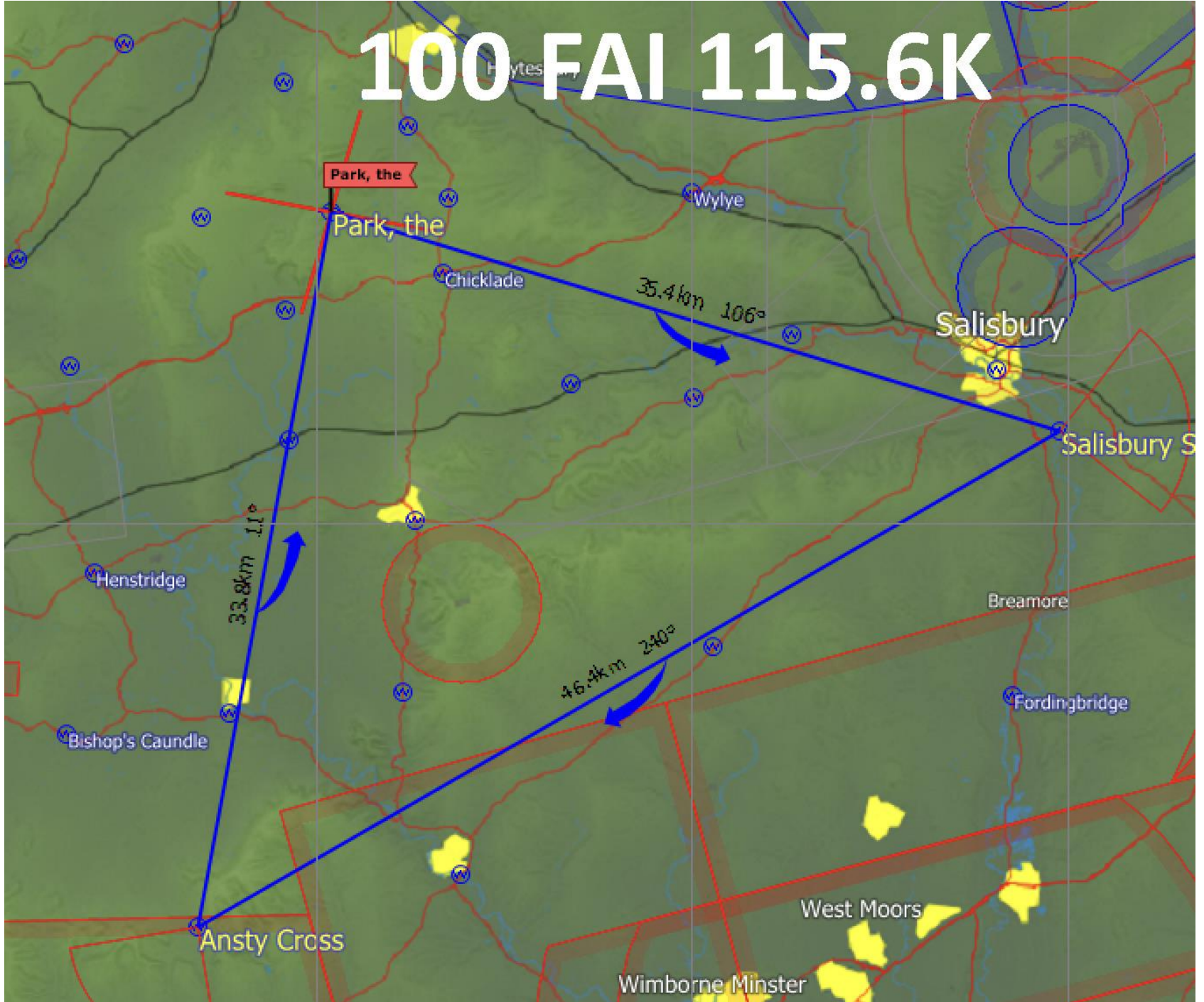
200 Normal PRK-SAS-CLS-PRK 220K

200 FAI PRK-SRE-WLY-WEB-PRK 202K

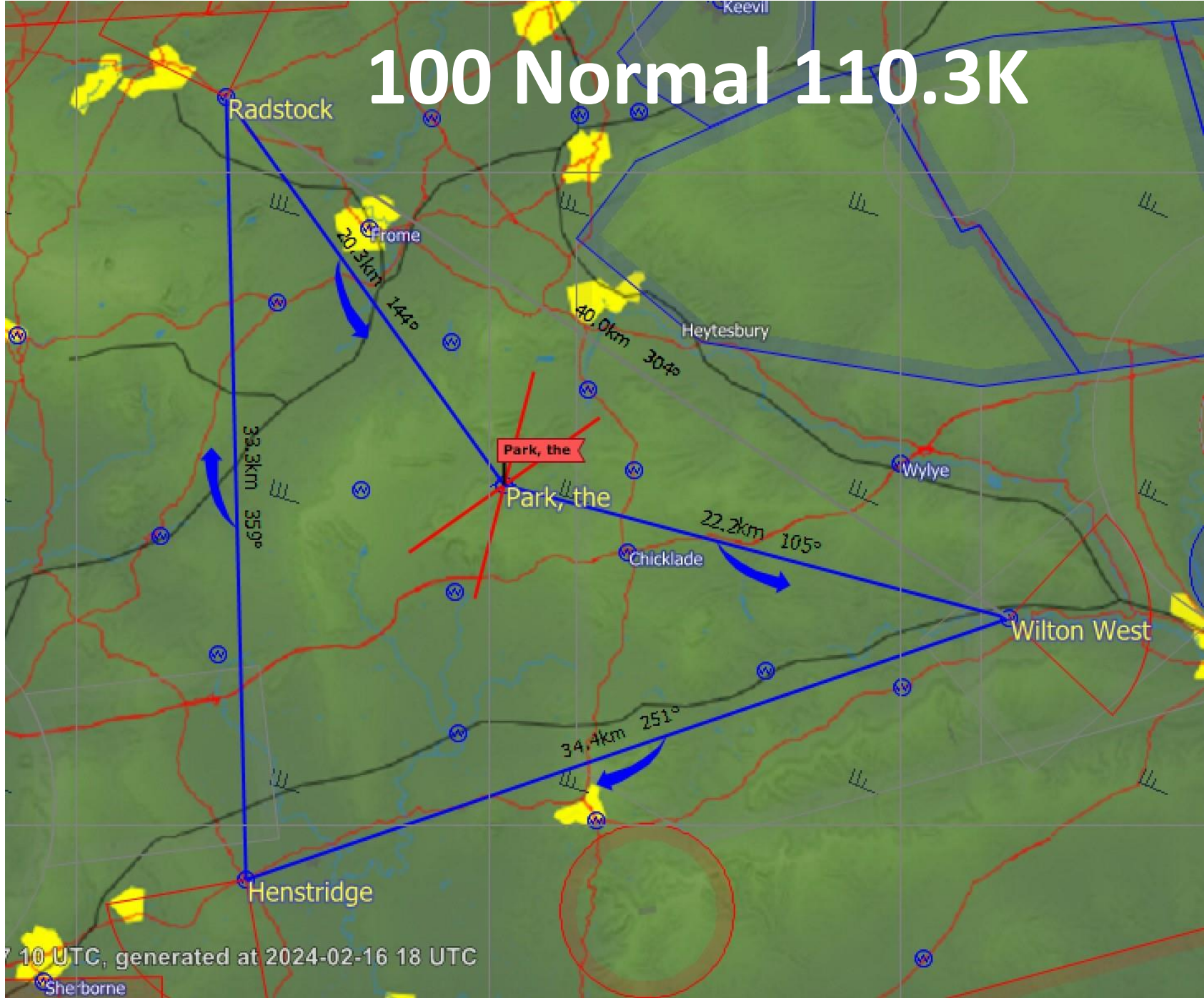
300 Normal PRK-CLS-CAC-PRK 307K

300 FAI PRK -WEB-WGW-BCW-PRK 319K

100 FAI 115.6K

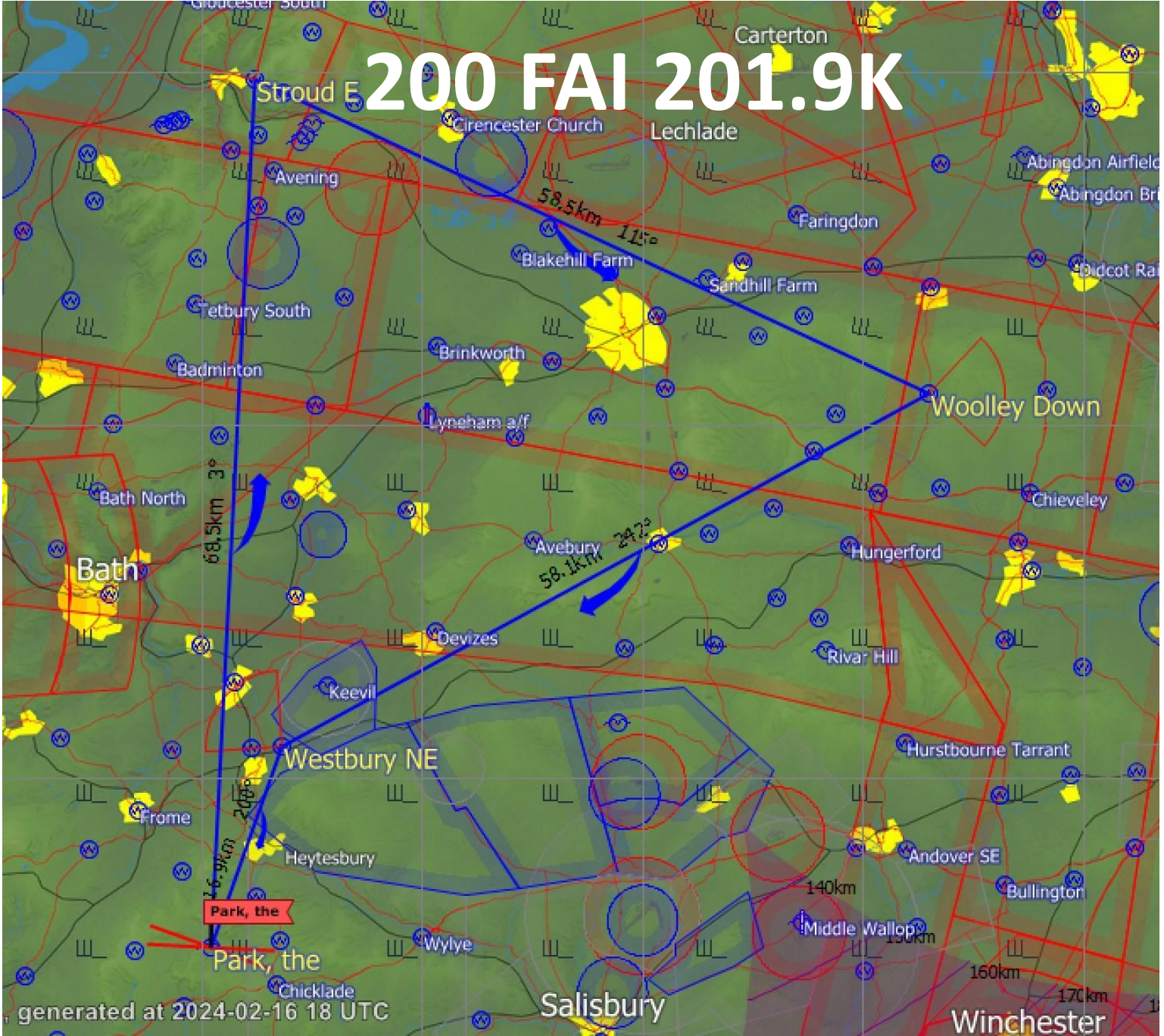


100 Normal 110.3K



7 10 UTC, generated at 2024-02-16 18 UTC

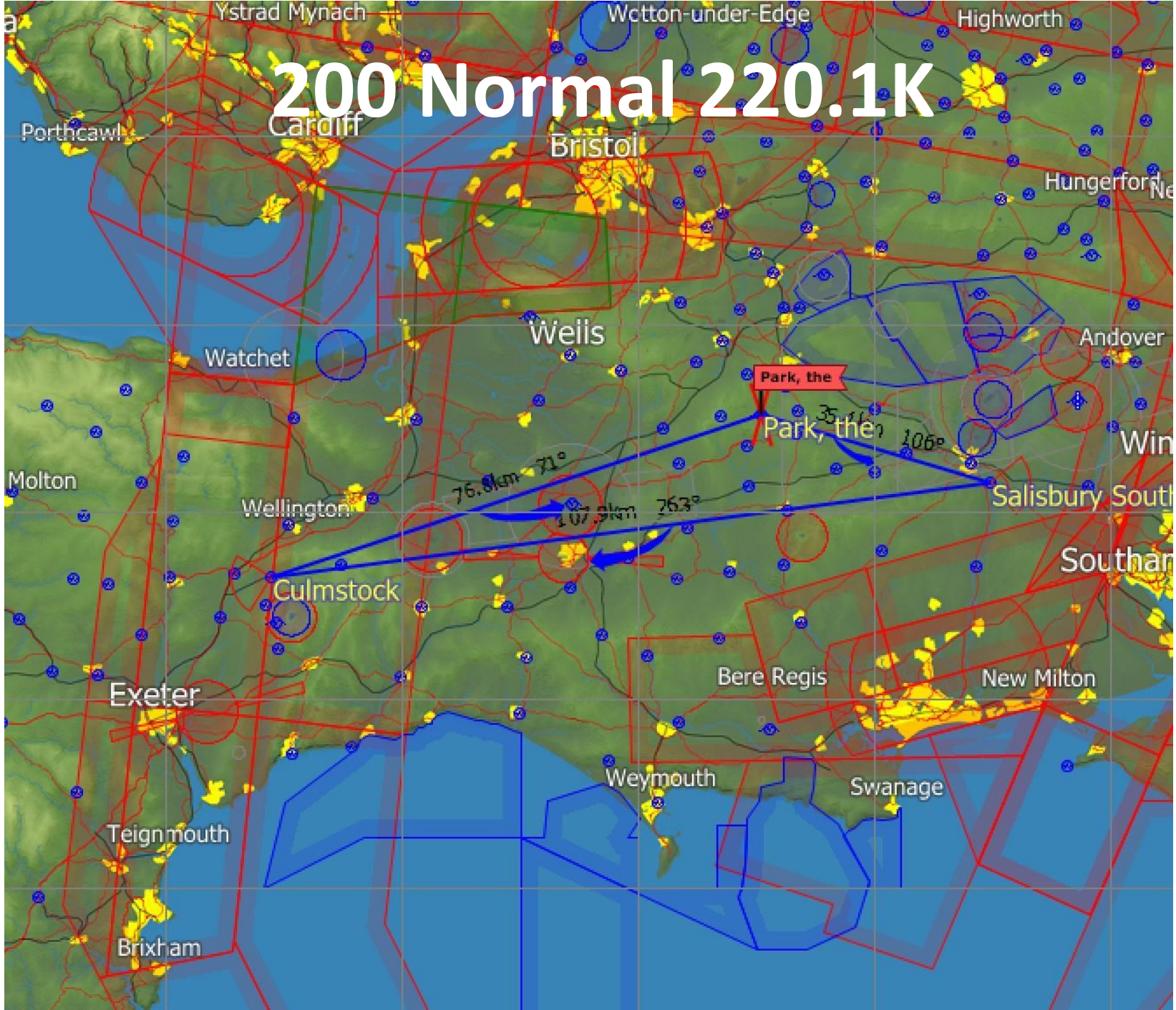
200 FAI 201.9K



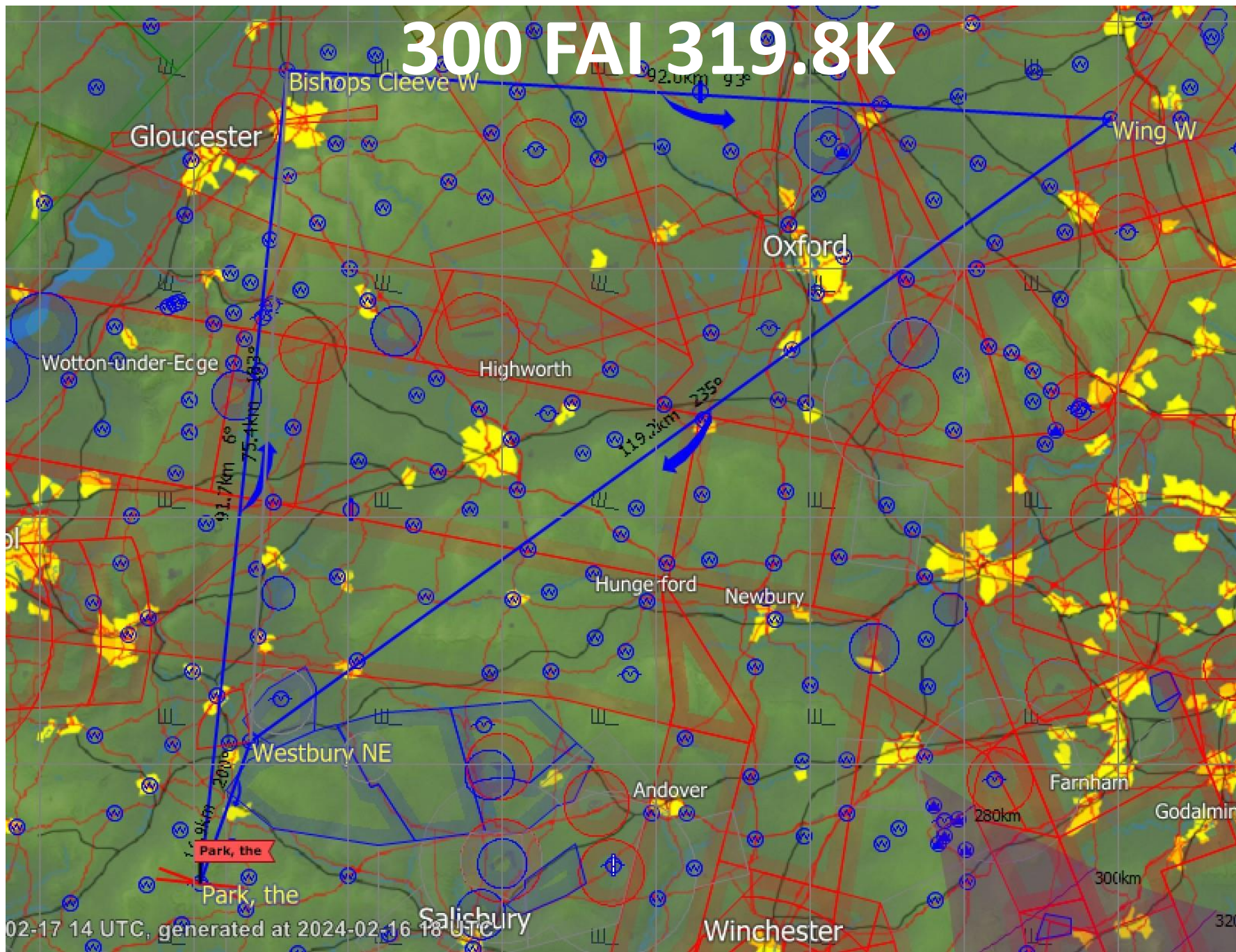
generated at 2024-02-16 18 UTC

Winchester

200 Normal 220.1K

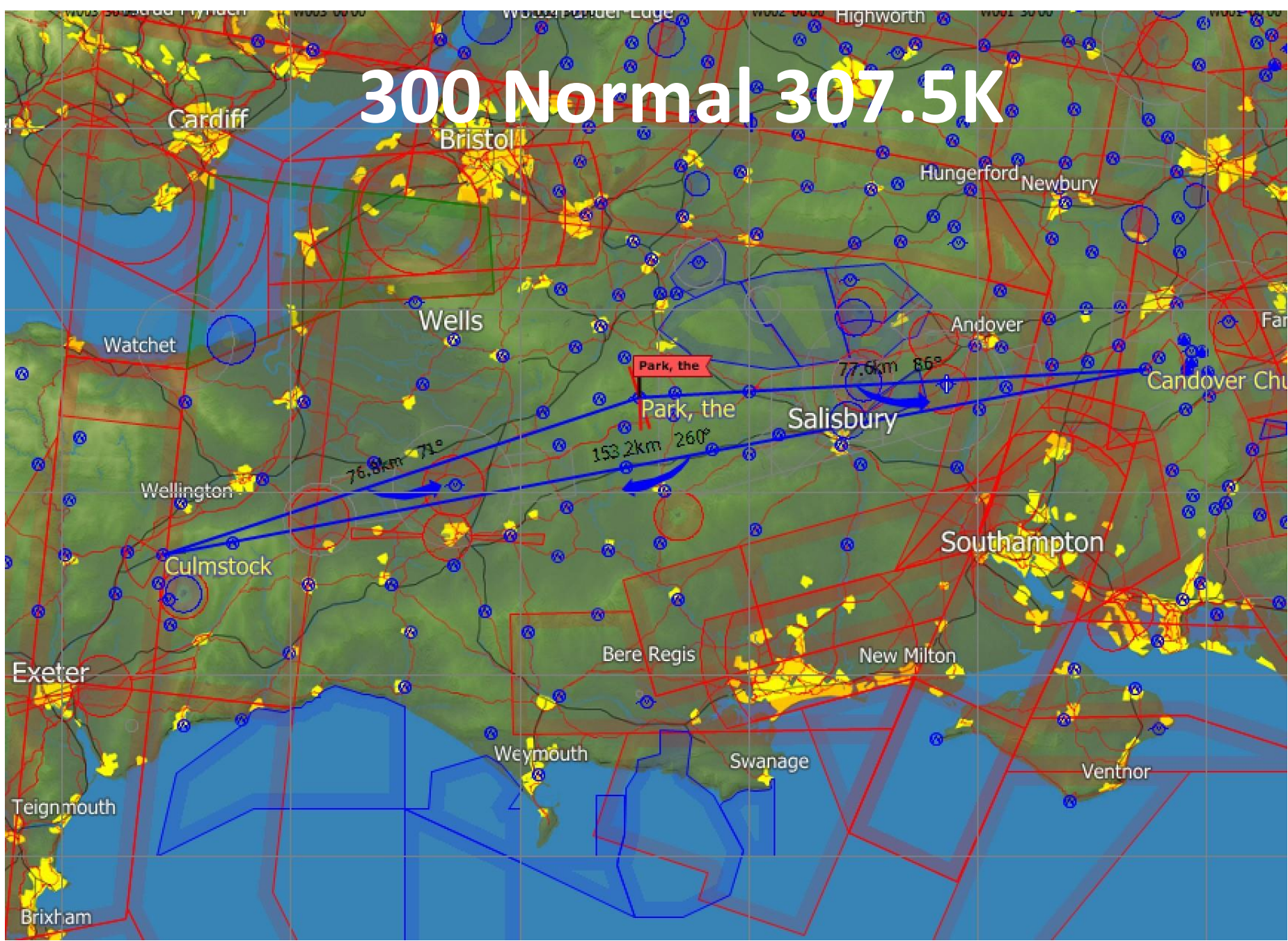


300 FAI 319.8K



02-17 14 UTC, generated at 2024-02-16 18 UTC

300 Normal 307.5K



Tips

- Use the tasks as a fallback or fallup from declared task.
- Ensure WEB is turned if flying a task to NE.
- PRK-SAS-BLD-PRK is excellent after getting back too early on a good day.
- Use them to increase possibilities. SAS first can be used for two different tasks. CLS for two also.
- Write tasks on back of chart and enter them all in the flight computer.
- All except 200K Normal and 300K Normal give maximum shape points on ladder.